

Part number:

009-10148a

HYDROMA

HYDRAULICKÉ SYSTÉMY

**HIDROMA
SYSTEMS**

UKŁADY HYDRAULICZNE

HYDROMA

ГИДРАВЛИЧЕСКИЕ СИСТЕМЫ

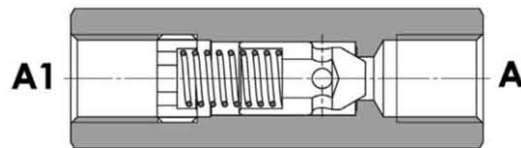
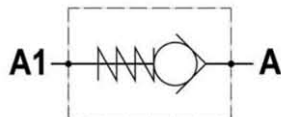
Tipo/Type

FPR-*.*

Sez./Section

D

Valvola di ritegno unidirezionale
Check valve



SPECIFICHE TECNICHE

Materiali: corpo in acciaio. L'otturatore conico guidato è in acciaio trattato termicamente. La superficie esterna è protetta mediante zincatura.

Portata: fino a 310 l/min

Pressione max.: 350 bar, vedasi tabella a parte

Pressione di apertura: standard 0,5 bar, a richiesta 2.5-5-10 bar

TECHNICAL SPECIFICATIONS

Materials: body is steel made. Guided poppet is in hardened steel. External surface is zinc plated.

Rated flow: up to 310 l/min

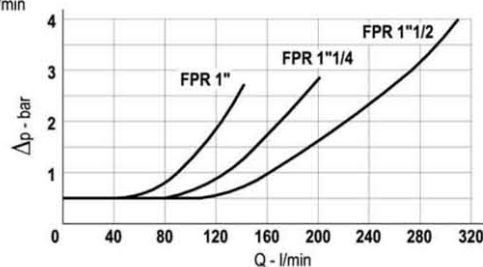
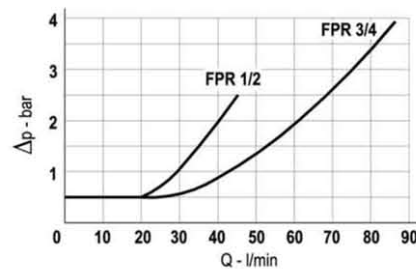
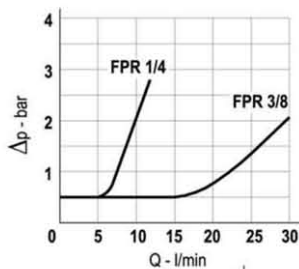
Max. pressure: 350 bar, see data sheet

Cracking pressure: 0,5 bar standard, on request: 2.5-5-10 bar

DIAGRAMMA PERDITE DI CARICO - PRESSURE DROP CURVES

Viscosità olio 24 mm²/sec. (3,5 °E)
Temperatura 50 °C

Oil viscosity 24 mm²/sec. (3,5 °E)
Temperature 50 °C



Part number:

009-10148b

HYDROMA

HYDRAULICKÉ SYSTÉMY

**HIDROMA
SYSTEMS**

UKŁADY HYDRAULICZNE

HYDROMA

ГИДРАВЛИЧЕСКИЕ СИСТЕМЫ

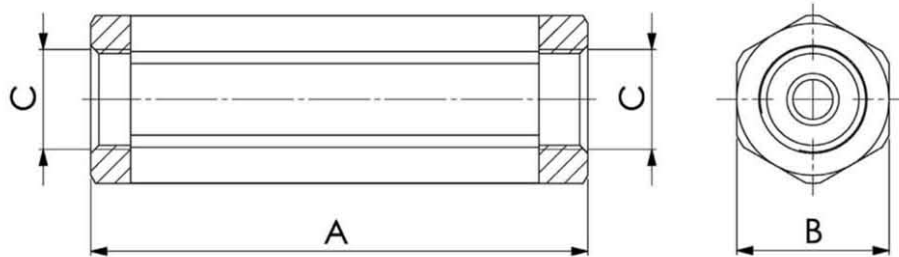
Tipo / Type

FPR--***

Sez./Section

D

Valvola di ritegno unidirezionale
Check valve



TIPO TYPE	PORTATA MAX. MAX. FLOW	PRESSIONE MAX. MAX. PRESSURE	A	B	C	PESO WEIGHT
	L/MIN	BAR	mm	mm	BSPP	Kg
FPR 1/4"	12	350	62	19	1/4"	0,10
FPR 3/8"	30	350	68	24	3/8"	0,17
FPR 1/2"	45	320	78	27	1/2"	0,22
FPR 3/4"	85	300	88	36	3/4"	0,45
FPR 1"	140	250	112	46	1"	0,97
FPR 1" 1/4	200	250	145	55	1"1/4	1,68
FPR 1" 1/2	310	210	155	60	1"1/2	2,10

ESEMPIO DI ORDINAZIONE - ORDERING CODE EXAMPLE

FPR 1/4 2,5

Codice base
Basic code

Connessioni
Port Sizes

- 1/4 - 1/4" BSPP
- 3/8 - 3/8" BSPP
- 1/2 - 1/2" BSPP
- 3/4 - 3/4" BSPP
- 1 - 1" BSPP
- 1 1/4 - 1 1/4" BSPP
- 1 1/2 - 1 1/2" BSPP *

Pressione apertura ritegno
Cracking pressure
Omettere se 0,5 bar
Indicare se 2,5 - 5 - 10 bar
Omit if 0,5 bar

* Specify if 2,5 - 5 - 10 bar