

Part number:

009-10170a

**HYDROMA**

HYDRAULICKÉ SYSTÉMY

**HIDROMA  
SYSTEMS**

UKŁADY HYDRAULICZNE

**HYDROMA**

ГИДРАВЛИЧЕСКИЕ СИСТЕМЫ

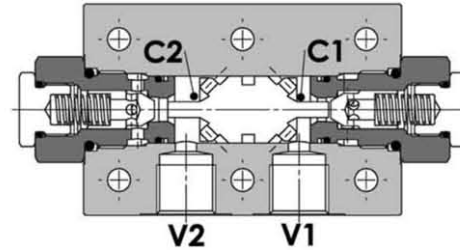
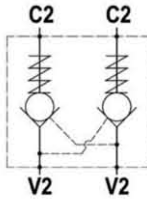
Tipo / Type

**FPD F-\*.~\*.~\*.~\*.~\***

Sez./Section

**F**

Valvola di blocco pilotata doppia, montaggio a flangia  
Double pilot operated check valve, gasket mounted



**SPECIFICHE TECNICHE**

**Materiali:** corpo in alluminio, a richiesta in acciaio. I componenti interni sono in acciaio trattato termicamente e rettificati.

**Portata max.:** 85 l/min

**Pressione max.:** vedere tabella pag. 02

**Pressione di apertura:** standard 2,5 bar, a richiesta 5-10 bar

**TECHNICAL SPECIFICATIONS**

**Materials:** std body is in aluminium, steel body on request. Internal parts are in hardened and ground steel.

**Rated flow:** 85 l/min

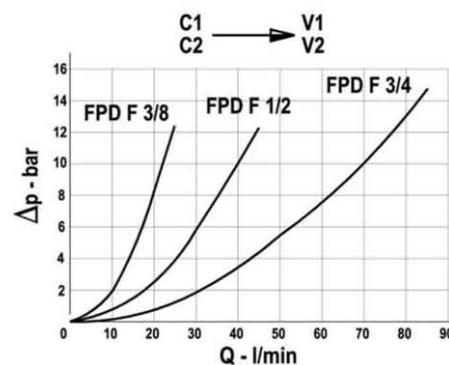
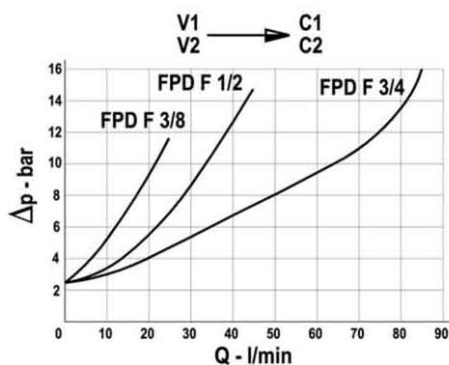
**Max. pressure:** see data sheet page 02

**Cracking pressure:** 2.5 bar standard, 5-10 bar on request

**DIAGRAMMA PERDITE DI CARICO - PRESSURE DROP CURVES**

Viscosità olio 24 mm<sup>2</sup>/sec. (3,5 °E)  
Temperatura 50 °C

Oil viscosity 24 mm<sup>2</sup>/sec. (3,5 °E)  
Temperature 50 °C



Part number:

**009-10170b**

**HYDROMA**

HYDRAULICKÉ SYSTÉMY

**HIDROMA  
SISTEMS**

UKŁADY HYDRAULICZNE

**HYDROMA**

ГИДРАВЛИЧЕСКИЕ СИСТЕМЫ

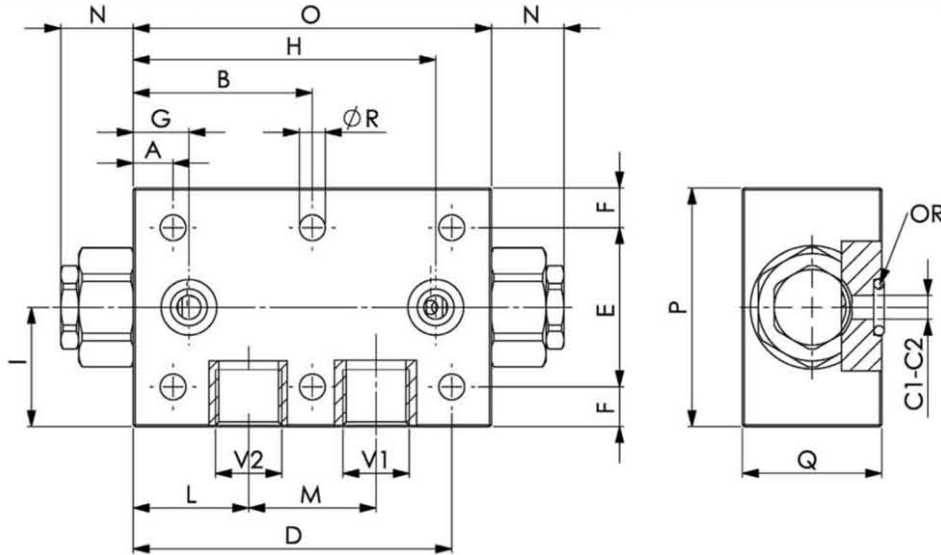
Tipo/Type

**FPD F-\*\*-\*\*-\*\***

Sez./Section

**F**

Valvola di blocco pilotata doppia, montaggio a flangia  
Double pilot operated check valve, gasket mounted



TIPO TYPE	PORTATA MAX. FLOW	PRESSIONE MAX. - MAX. PRESSURE (S=CORPO IN ACCIAIO, S=STEEL BODY)	V1 V2	C1 C2	A	B	D	E	F	G	H	I	L	M	N	O	P	Q	R	PESO WEIGHT
	l/min	bar	BSPP	mm	mm	mm	mm	mm	mm	mm	mm	mm	mm	mm	mm	mm	mm	mm	mm	Kg
FPD F 3/8	30	210 - 350 (S)	3/8"	6	10	45	80	40	10	14	76	30	29	32	18.5	90	60	34.5	6.5	0.650
FPD F 1/2	45	210 - 350 (S)	1/2"	8	15	55	95	40	15	22.5	87.5	35	38	34	14.5	110	70	34.5	8.5	0.750
FPD F 3/4	85	210 - 300 (S)	3/4"	14	15	82.5	150	50	20	30	135	45	57.5	50	14	165	90	49.5	10.5	2.300

Queste valvole, data la loro configurazione, non consentono una elevata contropressione allo scarico  
These valves, owing to their configuration - can't allow for a high discharge counterpressure

	FPD F 3/8	FPD F 1/2	FPD F 3/4
Rapporto di pilotaggio - Pilot ratio	1 : 7	1 : 3.5	1 : 4
Guarnizioni OR - Seals O-ring	9,19x2,62	15,54x2,62	18,64x3,53

**ESEMPIO DI ORDINAZIONE - ORDERING CODE EXAMPLE**

FPD F 3/8 2,5 G \* \*

Codice base  
Basic code

Connessioni  
Port sizes  
3/8 - 3/8" BSPP  
1/2 - 1/2" BSPP  
3/4 - 3/4" BSPP \*

Pressione apertura ritegno - Cracking pressure  
Omettere se 2,5 bar  
Indicare se 5 - 10 bar  
Omit if 2,5 bar  
Specify if 5 - 10 bar \*

Guarnizioni - Seals  
Omettere se BUNA-N  
Omit if BUNA-N  
\* V=Viton

Materiale corpo: omettere se alluminio,  
S=acciaio  
Body material: omit if aluminium,  
\* S=steel

Con guarnizione sul pilota  
With seal on pilot valve  
Omettere se non richiesta  
\* Omit if not request