

Part number:

**HYDROMA**

**HIDROMA  
SISTEMS**

**HYDROMA**

HYDRAULICKÉ SYSTÉMY

UKŁADY HYDRAULICZNE

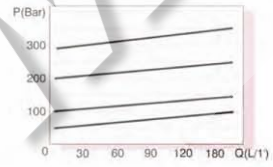
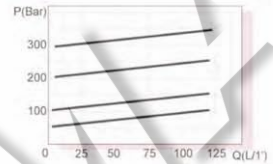
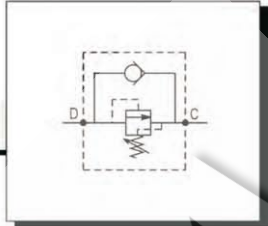
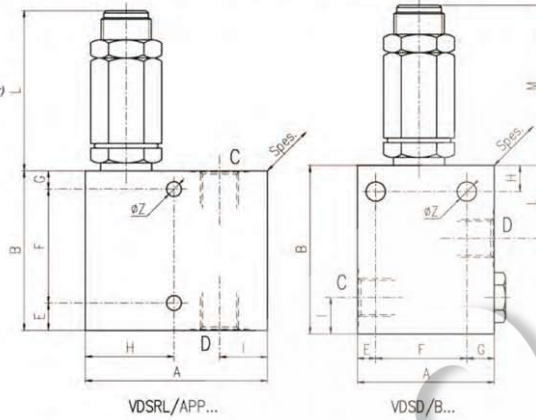
ГИДРАВЛИЧЕСКИЕ СИСТЕМЫ



**MATERIALI**  
CORPO: Alluminio (210Bar)-Acciaio(350Bar)  
PART INTERNI: AcciaioCmt-Tmp-Ref

VALVOLE DI SEQUENZA AD ANNULLAMENTO DELLA PRESSIONE  
PRIMARIA  
SEQUENCE VALVES

Tipo **VDSRL.../APP (DIRETTE)** **VDSD/B...(DIFFERENZIALI)**



Tipo	C-D	A	B	Spes.	E	F	G	H	I	L	M	Z	Q(L/1')
VDSRL 5-38/APP	G 3/8	80	70	35	12	50	8	39	21	62	-	6,5	25
VDSRL 5-12/APP	G 1/2	80	75	35	12	55	8	39	21	62	-	8,5	35
VDSRL 10-12/APP	G 1/2	90	80	40	12	60	8	44	24	62	-	8,5	50
VDSRL 10-34/APP	G 3/4	95	95	40	12	70	8	44	27	62	-	8,5	70
VDSRL 20-34/APP	G 3/4	110	100	50	12	80	8	53	32	82	-	8,5	120
VSD/B 38	G 3/8	80	74	30	8	40	12	11,5	16	32,5	59	8,5	30
VSD/B 12	G 1/2	70	80	35	8	48	14	10,5	20	32	58	8,5	60
VSD/B 34	G 3/4	90	90	40	10	70	10	11	22	34	58	10,5	120
VSD/B 100	G 1"	90	126	60	12	60	18	12	38	42	58	12	200

molle(Bar)

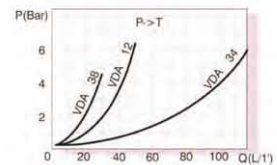
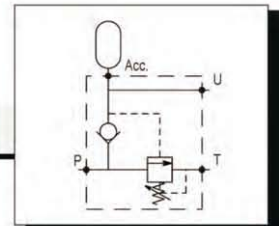
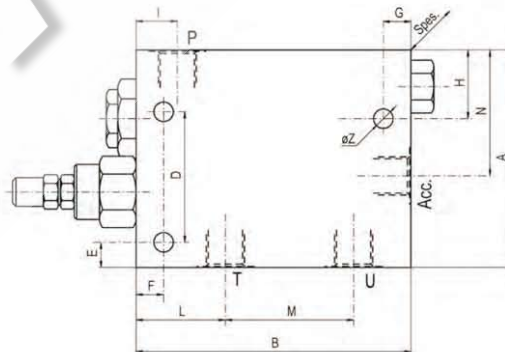
5-50 20-100 **50-220** 100-350



**MATERIALI**  
CORPO: Alluminio (210Bar)-Acciaio(350Bar)  
PART INTERNI: AcciaioCmt-Tmp-Ref

VALVOLE DI DISINSERIZIONE AUTOMATICA  
VALVES FOR ACCUMULATOR CIRCUIT

Tipo **VDA...**



Differenziale = 15%

Tipo	P-U	T	Acc.	A	B	Spes.	D	E	F	G	H	I	L	M	N	Z	Q(L/1')
VDA 38	G 3/8	G 3/8	M 18x1,5	95	120	60	-	11	12	12	30	19	39	56	39	8,5	25
VDA 12	G 1/2	G 1/2	G 1/2	108	120	60	-	12	13	11	42	19	39	56	39	8,5	50
VDA 34	G 3/4	G 3/4	G 1/2	120	145	60	84	9	9	10	72	32	53	69,5	54	8,5	100

molle(Bar)  
**0-110** **100-250**