

Part number:

HYDROMA

HYDRAULICKÉ SYSTÉMY

**HIDROMA
SISTEMS**

UKŁADY HYDRAULICZNE

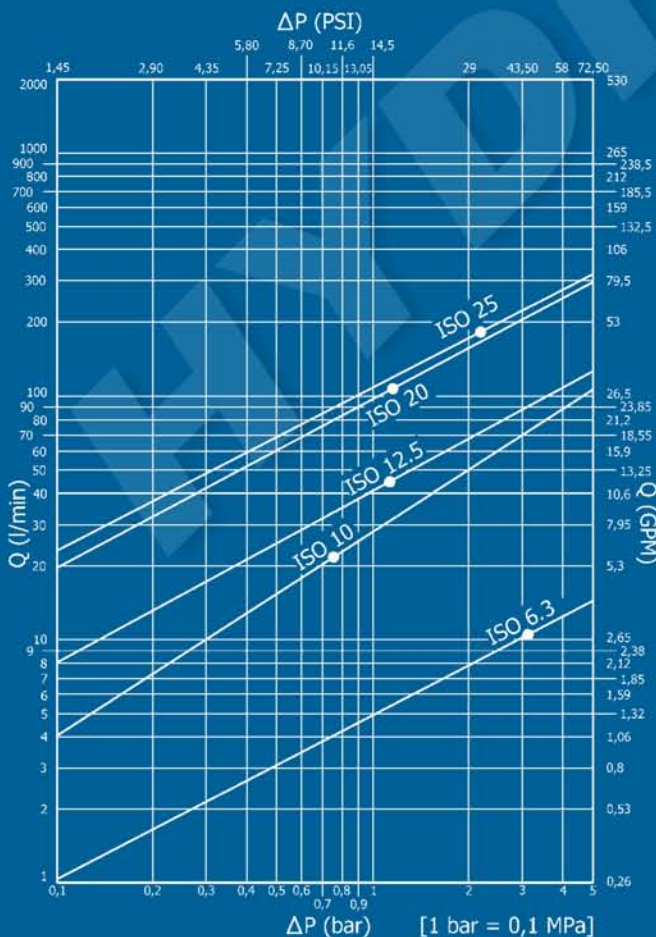
HYDROMA

ГИДРАВЛИЧЕСКИЕ СИСТЕМЫ

PPV3



Nominal size				Max working pressure	Rated flow	Max flow rate	Min burst pressure			Fluid spillage
DNP	BG	ISO	mm				Male	Female	Coupled	
06	1	6.3	5	35	12	17	180	140	140	0,5
10	2	10	8,5	30	23	46	130	150	130	1,9
13	3	12.5	10,5	23	45	90	93	160	110	2,7
20	4	19	15,7	25	106	190	120	140	110	9,3
25	5	25	17,3	22,5	189	280	90	110	97	16



Caratteristiche tecniche

- Norma: ISO 7241-1 A
- Ghiera: doppia azione
- Occlusione: valvola
- Aggancio: sfere radiali
- Materiale: acciaio
- Finitura: Zn-Fe (Cr III)
- Filettature: BSP – NPT – SAE – METRICHE
- Guarnizioni standard: NBR
- Temperatura d'esercizio: -25 °C +100 °C
- Guarnizioni opzionali: FKM, EPDM o altro
- Pressioni di esercizio: 225-350 bar
- Connessione in pressione: non consentita

Technical data

- Standard: ISO 7241-1 A
- Sleeve: double acting
- Occlusion: poppet
- Locking: radial balls
- Material: steel
- Finishing: Zn-Fe (Cr III)
- Threads: BSP – NPT – SAE – METRICS
- Standard seals: NBR
- Working temperature: -25 °C +100 °C
- Optional seals: FKM, EPDM or more
- Working pressure: 225-350 bar
- Connection under pressure: not allowed

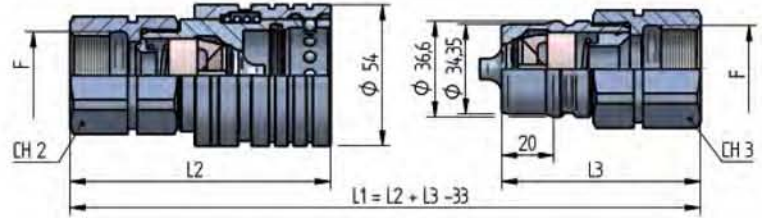
Technische Merkmale

- Norm: ISO 7241-1 A
- Hülse: doppelwirkend
- Verschluss: ventil
- Kupplung: Radialkugeln
- Werkstoff: Stahl
- Ausführung: Zn-Fe (Cr III)
- Gewinde: BSP – NPT – SAE – METRISCHE
- Standard-Dichtungen: NBR
- Betriebstemperatur: -25 °C +100 °C
- Dichtungen nach Wahl: FKM, EPDM, usw.
- Betriebsdruck: 225-350 bar
- Kuppeln unter Druck: nicht möglich

Caracteristiques techniques

- Norme: ISO 7241-1 A
- Douille: double action
- Obturation: clapet
- Accrochage: billes radiales
- Matériel: acier
- Traitement: Zn-Fe (Cr III)
- Taraudage: BSP – NPT – SAE – METRIQUES
- Joints standard: NBR
- Température de service: -25 °C +100 °C
- Joints facultatifs: FKM, EPDM, ect.
- Pression de service: 225-350 bar
- Connexion sous pression: pas possible

PPV3 DN25 - BG 5 - ISO 25

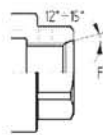


THREADS	CH2	L2	CH3	L3	L4	ØT	F	STANDARD	FEMMINA - FEMALE - MUFFE - FEMELLE			MASCHIO - MALE - STECKER - MALE		
									COD. F	Weight (g)	Pack. (pcs.)	COD. M	Weight (g)	Packaging (pcs.)
IG 1	41	99,5	41	76			BSP 3/4"	DIN 3852-2-X	PPV3.2519.112	870	18	PPV3.2519.113	453	30
	41	99,5	41	76			NPT 3/4"	ANSI B1.20.3	PPV3.2519.012	877	18	PPV3.2519.013	460	30
	41	99,5	41	76			BSP 1"	DIN 3852-2-X	PPV3.2525.112	815	18	PPV3.2525.113	398	30
	41	99,5	41	76			NPT 1"	ANSI B1.20.3	PPV3.2525.012	827	18	PPV3.2525.013	411	30
	41	99,5	41	76			M30x1,5	ISO 6149-1	PPV3.2530.102	842	18	PPV3.2530.103	426	30
IG 2	41	99,5	41	76			1"1/16-16 UN 2B	SAE J 1926-1	PPV3.2527.032	863	18	PPV3.2527.033	447	30
	41	99,5	41	76			1"5/16-12 UN 2B	SAE J 1926-1	PPV3.2533.032	842	18	PPV3.2533.033	389	30
AG 5	41	101,5	41	78	18		BSP 1"	DIN 3852-2-B	PPV3.2525.212	814	18	PPV3.2525.213	398	30
	41	97,5	41	74	17		BSP 1"	BS B5200	PPV3.2525.702	790	18	PPV3.2525.703	373	30
	41	99,5	41	76	16		BSP 3/4"	DIN 3852-2-A	PPV3.2519.712	788	18	PPV3.2519.713	372	30
	41	101,5	41	78	18		BSP 1"	DIN 3852-2-A	PPV3.2525.712	814	18	PPV3.2525.713	398	30
AG 3	41	92,5	41	69	12	18L	M26x1,5	ISO 8434-1-L	PPV3.2526.302	765	18	PPV3.2526.303	348	30
	41	94,5	41	71	14	22L	M30x2	ISO 8434-1-L	PPV3.2530.302	770	18	PPV3.2530.303	353	30
	41	94,5	41	71	14	28L	M36x2	ISO 8434-1-L	PPV3.2536.302	775	18	PPV3.2536.303	359	30
	46	96,5	46	73	16	35L	M45x2	ISO 8434-1-L	PPV3.2545.302	863	18	PPV3.2545.303	447	30
	41	96,5	41	73	16	20S	M30x2	ISO 8434-1-S	PPV3.2530.402	781	18	PPV3.2530.403	364	30
	41	98,5	41	75	18	25S	M36x2	ISO 8434-1-S	PPV3.2536.402	803	18	PPV3.2536.403	387	30
	46	100,5	46	77	20	30S	M42x2	ISO 8434-1-S	PPV3.2542.402	884	10	PPV3.2542.403	468	25
	55	102,5	55	79	22	38S	M52x2	ISO 8434-1-S	PPV3.2552.402	1072	10	PPV3.2552.403	655	25
AGS 3	41	114,5	41	91	34	18L	M26x1,5	ISO 8434-1-L	PPV3.2526.502	817	10	PPV3.2526.503	436	25
	41	114,5	41	91	34	22L	M30x2	ISO 8434-1-L	PPV3.2530.502	831	10	PPV3.2530.503	462	25
	41	114,5	41	91	34	28L	M36x2	ISO 8434-1-L	PPV3.2536.502	858	10	PPV3.2536.503	499	25
	46	120,5	46	97	40	35L	M45x2	ISO 8434-1-L	PPV3.2545.502	1049	10	PPV3.2545.503	714	25
	41	116,5	41	93	36	20S	M30x2	ISO 8434-1-S	PPV3.2530.602	848	10	PPV3.2530.603	479	25
	41	118,5	41	95	38	25S	M36x2	ISO 8434-1-S	PPV3.2536.602	898	10	PPV3.2536.603	540	25
	46	120,5	46	97	40	30S	M42x2	ISO 8434-1-S	PPV3.2542.602	1003	10	PPV3.2542.603	650	20
	55	133,5	55	110	53	38S	M52x2	ISO 8434-1-S	PPV3.2552.602	1366	10	PPV3.2552.603	949	20

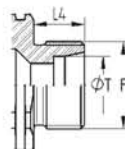
THREADS



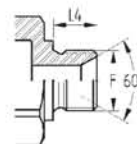
IG 1



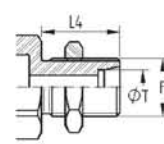
IG 2



AG 3



AG 5



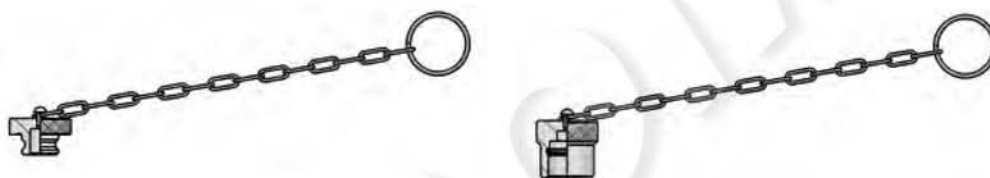
AGS 3

PLASTIC



NOMINAL SIZE		FEMALE DUST PLUG				MALE DUST CAP				COLOUR	MATERIAL
DNP	BG	ISO	COD. F	Weight (g)	Packaging (pcs.)	COD. M	Weight (g)	Packaging (pcs.)			
06	1	6.3	SPAV.06002	4	200	SPAV.06003	4	150	RED	Polyethylene	
10	2	10	SPAV.10002	14	100	SPAV.10003	16	100	RED	PVC	
13	3	12.5	SPAV.13002	20	50	SPAV.13003	21	50	RED	PVC	
13	3	12.5	SPAV.13012	20	50	SPAV.13013	21	50	YELLOW	PVC	
13	3	12.5	SPAV.13022	20	50	SPAV.13023	21	50	GREEN	PVC	
13	3	12.5	SPAV.13032	20	50	SPAV.13033	21	50	BLUE	PVC	
13	3	12.5	SPAV.13042	20	50	SPAV.13043	21	50	BLACK	PVC	
13	3	12.5	SPAV.13052	20	50	SPAV.13053	21	50	WHITE	PVC	
20	4	19	SPAV.20002	33	50	SPAV.20003	39	25	RED	PVC	
25	5	25	SPAV.25002	16	50	SPAV.25003	19	25	RED	Polyethylene	

METAL



NOMINAL SIZE		FEMALE DUST PLUG				MALE DUST CAP				COLOUR	MATERIAL
DNP	BG	ISO	COD. F	Weight (g)	Packaging (pcs.)	COD. M	Weight (g)	Packaging (pcs.)			
06	1	6.3	SPAV.06202*	33	100	SPAV.06203*	35	100	-	Aluminium	
10	2	10	SPAV.10202	42	80	SPAV.10203	50	80	-	Aluminium	
13	3	12.5	SPAV.13202	51	50	SPAV.13203	70	50	-	Aluminium	
20	4	19	SPAV.20202	66	25	SPAV.20203	107	25	-	Aluminium	
25	5	25	SPAV.25202*	88	20	SPAV.25203*	160	20	-	Aluminium	

* REALIZZATI SU RICHIESTA DEL CLIENTE - AVAILABLE ON REQUEST - AUF ANFRAGE LIEFERBAR - DISPONIBLES SUR DEMANDE

AUTOMATIC



NOMINAL SIZE		AUTOMATIC FEMALE CAP				AUTOMATIC MALE CAP				COLOUR	MATERIAL
DNP	BG	ISO	COD. F	Weight (g)	Packaging (pcs.)	COD. M	Weight (g)	Packaging (pcs.)			
13	3	12.5	SPPV.13302	22	100	SPPV.13303	59	40	BLACK	Nylon	
13	3	12.5	SPPV.13312	22	100				YELLOW	Nylon	
13	3	12.5	SPPV.13322	22	100				GREEN	Nylon	
13	3	12.5	SPPV.13332	22	100				BLUE	Nylon	
13	3	12.5	SPPV.13342	22	100	SPPV.13343	59	40	RED	Nylon	

GUARNIZIONI DI RICAMBIO / SPARE PARTS / ERSATZDICHTUNGEN / JOINTS

AL CODICE DELLA GUARNIZIONE IN NBR AGGIUNGERE 'E' PER EPDM o 'V' PER VITON

TO THE NBR GASKET CODE ADD 'E' FOR EPDM OR 'V' FOR VITON

ZU DER ARTIKELNR. DER NBR DICHTUNG GEBEN SIE 'E' FUER EPDM ODER 'V' FUER VITON AN

AU CODE DU JOINT EN NBR JOINDRE 'E' POUR EPDM OU 'V' POUR VITON

NOMINAL SIZE		FEMALE GASKET		
DNP	BG	ISO	NBR	PTFE
06	1	6.3	PAV.006.120	PAV.006.130
10	2	10	PPV.010.120	PPV.010.130
13	3	12.5	PPV.013.120	PPV.013.130
20	4	19	PAV.019.120	PAV.019.130
25	5	25	PAV.025.120	PAV.025.130