

Part number:

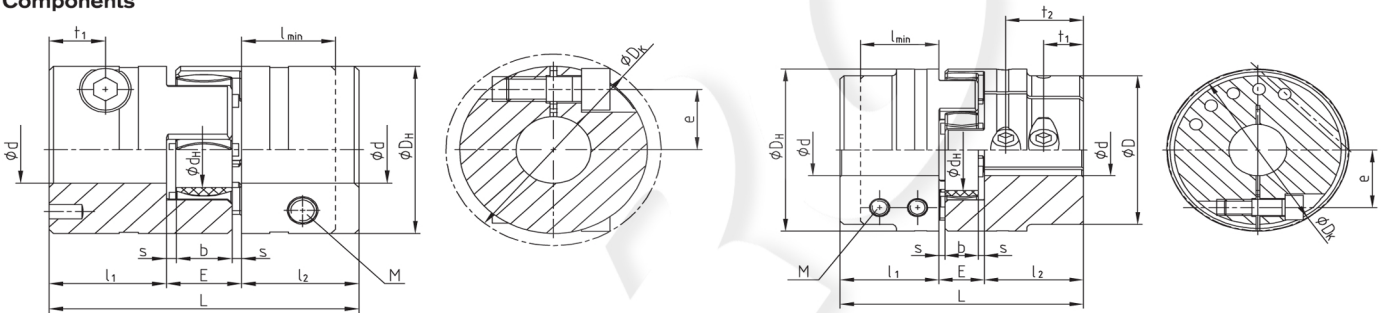
Clamping hubs



For legend of pictogram please refer to flapper on the cover



Components



ROTEX® 19 - 28

ROTEX® 38 - 90

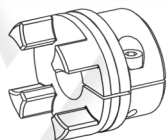
Size	Dimensions [mm]															Screw DIN EN ISO 4762	
	max. d	L	l ₁ /l ₂	l _{min}	E	b	s	D _H	D	d _H	D _K	t ₁	t ₂	e	M	T _A [Nm]	
19	20 ¹⁾	66	25	20	16	12	2,0	40	-	18	46,0	12	-	14,5	M6	14	
24	28	78	30	25	18	14	2,0	55	-	27	57,5	12	-	20,0	M6	14	
28	38	90	35	30	20	15	2,5	65	-	30	73,0	14 ²⁾	-	25,0	M8	35	
38	42	114	45	35	24	18	3,0	80	70	38	77,5	19	-	26,5	M8	35	
42	50	126	50	42	26	20	3,0	95	85	46	93,5	18 ²⁾	-	32,0	M10	69	
48	55	140	56	46	28	21	3,5	105	95	51	105,0	21 ²⁾	-	36,0	M12	120	
55	68	160	65	50	30	22	4,0	120	110	60	119,5	26	51 ²⁾	42,5 ³⁾	M12	120	
65	70	185	75	55	35	26	4,5	135	115	68	132,5	33	61 ²⁾	50,0 ³⁾	M12	120	
75	80	210	85	65	40	30	5,0	160	135	80	158,0	36	68 ²⁾	57,0 ³⁾	M16	295	
90	90	245	100	80	45	34	5,5	200	160	100	197,0	40	80 ²⁾	72,0 ³⁾	M20	580	

Size	Bore surface and the corresponding transmittable friction torques [Nm] of ROTEX® clamping hubs design 2.0																														
	Ø8	Ø10	Ø11	Ø14	Ø15	Ø16	Ø18	Ø19	Ø20	Ø22	Ø24	Ø25	Ø28	Ø30	Ø32	Ø35	Ø38	Ø40	Ø42	Ø45	Ø48	Ø50	Ø55	Ø60	Ø65	Ø70	Ø75	Ø80	Ø85	Ø90	
19	44	46	47	51	52	53	55	57	58																						
24		59	60	64	65	66	68	70	71	73	76	77	80																		
28			139	141	144	148	150	152	157	161	163	170	174	178	185	191															
38				163	165	170	172	174	178	183	185	192	196	200	207	213	217	222													
42								291	297	304	308	318	325	332	342	353	360	367	377	387	394										
48								466	476	486	491	506	516	526	542	557	567	577	592	607	618	643									
55														1185	1215	1245	1266	1286	1316	1347	1367	1417	1468	1519							
65															1316	1347	1367	1387	1417	1448	1468	1519	1569	1620	1671						
75																2869	2926	2983	3022	3117	3213	3213	3309	3404	3500	3595					
90																	5220	5310	5400	5460	5610	5760	5910	6060	6210	6360	6510	6660			

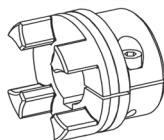
¹⁾ With type 2.1 dmax. Ø17 mm

²⁾ With reduced hubs dimension t1 varies or the number of screws changes from 2-off to 1-off

³⁾ t1 and t2 have a different dimension e



Type 2.0
Clamping hub, single slot,
without feather keyway



Type 2.1
Clamping hub, single slot, with
feather keyway



Type 2.3
Clamping hub with spline bore
(For a selection of our programme of spline bores please see page 2)

Ordering example:

ROTEX® 24	98 Sh-A	2.1	Ø 24	2.0	Ø20
Coupling size	Spider hardness	Hub type	Finish bore	Hub type	Finish bore

Flexible jaw couplings

Cylindrical bores and spline bores

ROTEX® Size/material		Un-bored	Ø6	Ø8	Ø9	Ø10	Ø11	Ø12	Ø14	Ø15	Ø16	Ø17	Ø18	Ø19	Ø20	Ø22	Ø24	Ø25	Ø26	Ø30	Ø32	Ø35	Ø38	Ø40	Ø42	Ø45	Ø48	Ø50	Ø55	Ø60	Ø65	Ø70	Ø75	Ø80	Ø85	Ø90	Ø100		
14	Sint	•																																					
	Al-H	•	•	•	•	•	•	•	•	•	•																												
19	Sint	•																																					
	Al-D	•	•	•	•	•	•	•	•	•	•	•	•	•	•	•	•	•	•	•	•	•	•	•	•	•	•	•	•	•	•	•	•	•	•	•	•	•	•
24	St	•	•	•	•	•	•	•	•	•	•	•	•	•	•	•	•	•	•	•	•	•	•	•	•	•	•	•	•	•	•	•	•	•	•	•	•	•	•
	Al-D	•																																					
28	St	•																																					
	Al-D	•																																					
38	GJL	•																																					
	St	•																																					
42	GJL	•																																					
	St	•																																					
48	GJL	•																																					
	St	•																																					
55	GJL	•																																					
	St	•																																					
65	GJL	•																																					
	St	•																																					
75	GJL	•																																					
	St	•																																					
90	GJL	•																																					
	St	•																																					

Basic programme SAE involute spline											
Spline code	Size	Pitch circle	Pitch	No. of teeth	Angle	Spline code	Size	Pitch circle	Pitch	No. of teeth	Angle
PH-S	5/8"	14,28	16/32	9	30°	PS-S	1 1/2"	35,98	12/24	17	30°
PI-S	3/4"	17,46	16/32	11	30°	PD-S	1 1/2"	36,51	16/32	23	30°
PB-S	7/8"	20,63	16/32	13	30°	PE-S	1 3/4"	42,86	16/32	27	30°
PB-BS	1"	23,81	16/32	15	30°	PK	1 3/4"	41,275	8/16	13	30°
PJ	1 1/8"	26,98	16/32	17	30°	PT-C ¹⁾	2"	47,625	8/16	15	30°
PC-S	1 1/4"	29,63	12/24	14	30°	PQ-C ¹⁾	2 1/4"	53,975	8/16	17	30°
PA-S	1 3/8"	33,33	16/32	21	30°						

Basic programme spline bores to DIN 5482										
Size	Pitch circle	Pitch	No. of teeth	Profile correction	Size	Pitch circle	Pitch	No. of teeth	Profile correction	
A 17 x 14	14,40	1,6	9	+0,600 ²⁾	A 35 x 31	31,50	1,75	18	+0,676	
A 20 x 17	19,20	1,6	12	-0,2	A 40 x 36	38,00	1,9	20	+0,049	
A 25 x 22	22,40	1,6	14	+0,550	A 45 x 41	44,00	2	22	+0,181	
A 28 x 25	26,25	1,75	15	+0,302	A 50 x 45	48,00	2	24	+0,181	
A 30 x 27	28,00	1,75	16	+0,327						

Basic programme spline bores to DIN 5480							
Spline code	Pitch circle	Pitch	No. of teeth	Spline code	Pitch circle	Pitch	No. of teeth
20 x 1 x 18 x 7H	18,0	1	18	40 x 2 x 18 x 8H	36,0	2	18
20 x 1,25 x 14 x 7H	17,5	1,25	14	45 x 2 x 21 x 7H	41,0	2	21
25 x 1,25 x 18 x 7H	22,5	1,25	18	48 x 2 x 22 x 9H	44,0	2	22
28 x 1,25 x 21 x 7H	26,25	1,25	21	50 x 2 x 24 x 8H	48,0	2	24
30 x 2 x 14 x 7H	26,0	2	14	60 x 2 x 28 x 8H	56,0	2	28
32 x 2 x 14 x 8H	28,0	2	14	75 x 3 x 24 x 7H	72,0	3	24
35 x 2 x 16 x 8H	32,0	2	16	80 x 3 x 25 x 8H	75,0	3	25

Basic programme spline bores acc. to DIN 9611 (p.t.o. shaft spline)				
Size	Width of keyway	No. of teeth	Tip circle	Root circle
1 3/8"	8,69	6	34,93	29,65
1 3/8"	-	21	34,95	34,80 ³⁾
1 3/4"	11,07	6	44,45	37,74
1 3/4"	-	20	45,20	40,20

Spline clamping hubs are often adapted to the shafts of hydraulic pumps/hydraulic motors. Please ask us about the corresponding hub length of the spline code!

¹⁾ For clamping hubs only, for plug-in hubs use code PT or PQ.

²⁾ Profile correction different from DIN

³⁾ Similar to code PA-S