

Part number:

HYDROMA

HYDRAULICKÉ SYSTÉMY

**HIDROMA
SISTEMS**

UKŁADY HYDRAULICZNE

HYDROMA

ГИДРАВЛИЧЕСКИЕ СИСТЕМЫ

ACCESSORI PER LANTERNA ACCESSORIES FOR BELLHOUSINGS

ANELLI AMMORTIZZANTI / DAMPING RINGS

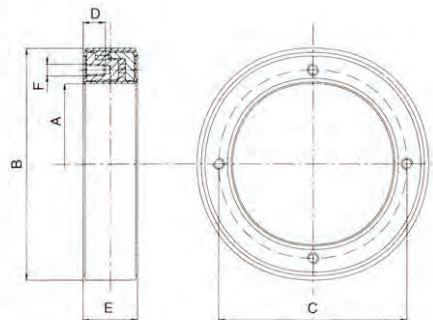
tipo / series **A**

Costituiti da due anelli con interposta gomma vulcanizzata, vengono applicati tra lanterna e coperchio del serbatoio per smorzare le vibrazioni generate dalla trasmissione. Resistenti agli olii minerali possono lavorare fino ad una temperatura di + 80°C, riducendo la rumorosità del sistema di circa 3÷5 decibel.

These articles are made of two rings moulded into vulcanized rubber. Interposed between the bellhousing and the tank cover, they diminish the noise created by the power transmission by approx. 3÷5 dB. The employed rubber is mineral oil resistant, max. working temperature is 80°C.

Tabella / Table 22

| Codice Part number | Dimensioni (mm) / Dimensions (mm) | | | | | |
|-----------------------|-----------------------------------|-----|-----|----|------|-----|
| | A | B | C | D | E | F |
| A-200 | 146 | 200 | 165 | 15 | 43 | M10 |
| A-250 | 191 | 250 | 215 | 18 | 48 | M12 |
| A-300 | 238 | 300 | 265 | 18 | 53 | M12 |
| A-350 | 261 | 350 | 300 | 24 | 61,5 | M16 |
| A-400 | 311 | 400 | 350 | 24 | 69 | M16 |



SUPPORTO MOTORE A PIEDINO / FOOT FLANGES

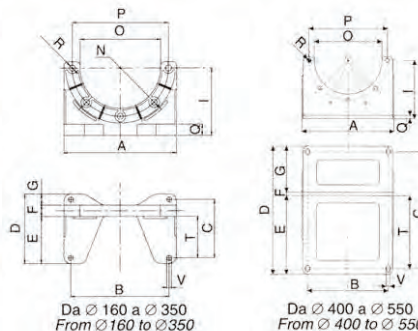
tipo / series **P**

Costruiti in lega di alluminio ad elevata resistenza meccanica vengono utilizzati quali supporti per lanterne con flangiatura normalizzata B5 sino ad un diametro esterno del motore di 350 mm. Da un Ø 400 est. del motore i piedini vengono costruiti in ferro.

Manufactured of high resistance aluminium alloy, these flanges are used to support our bellhousings with standard B5 flange up to an external diameter of the motor of Ø 350 mm. From Ø 400 upwards these foot flanges are made of steel.

Tabella / Table 23

| Codice Part number | Dimensioni (mm) / Dimensions (mm) | | | | | | | | | | | | | | |
|-----------------------|-----------------------------------|-----|-----|-----|-----|----|-----|-----|-----|-----|-----|----|------|------|----|
| | A | B | C | D | E | F | G | I | N | O | P | Q | R | T | V |
| P160 | 165 | 135 | 80 | 100 | 45 | 10 | 45 | 98 | 80 | 111 | 130 | 10 | 9 | 35 | 9 |
| P200 | 202 | 168 | 103 | 125 | 54 | 19 | 54 | 123 | 100 | 140 | 165 | 22 | 11,5 | 42,5 | 9 |
| P250 | 252 | 220 | 130 | 155 | 105 | 25 | 25 | 150 | 125 | 180 | 215 | 25 | 13 | 92,5 | 11 |
| P300 | 302 | 265 | 160 | 190 | 115 | 25 | 50 | 175 | 150 | 240 | 265 | 25 | 13 | 100 | 13 |
| P350 | 362 | 310 | 250 | 286 | 183 | 30 | 73 | 205 | 175 | 256 | 300 | 30 | 18 | 165 | 15 |
| P400 | 410 | 360 | 520 | 570 | 350 | 15 | 205 | 260 | 175 | 301 | 350 | 15 | 18 | 325 | 18 |
| P450 | 460 | 400 | 590 | 640 | 390 | 15 | 235 | 295 | 200 | 351 | 400 | 15 | 18 | 365 | 18 |
| P550 | 560 | 500 | 690 | 740 | 470 | 15 | 255 | 350 | 250 | 450 | 500 | 15 | 18 | 445 | 18 |



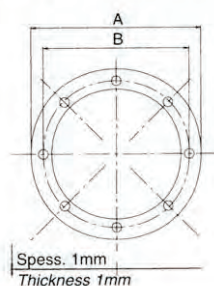
GUARNIZIONI / GASKETS

tipo / series **GL**

Guarnizioni in guarnital per lanterne. Tali guarnizioni vengono poste tra lanterne e serbatoi quale elemento di tenuta.

Gaskets for bellhousings, made of GUARNITAL.

They are interposed between bellhousing and the oil tank.



| Codice Part number | Dimensioni (mm) Dimensions (mm) | |
|-----------------------|------------------------------------|-----|
| | A | B |
| GL 140 | 140 | 115 |
| GL 160 | 160 | 130 |
| GL 200 | 200 | 165 |
| GL 250 | 250 | 215 |
| GL 300 | 300 | 265 |
| GL 350 | 350 | 300 |
| GL 400 | 400 | 350 |

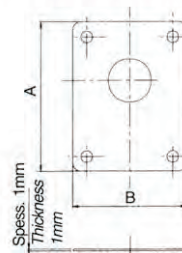
GUARNIZIONI / GASKETS

tipo / series **GP**

Guarnizioni in guarnital per pompe ad ingranaggi. Tali guarnizioni vengono poste tra pompa e lanterna quale elemento di tenuta.

Gaskets for gear pumps, made of GUARNITAL.

They are interposed between bellhousing and the pump.



| Codice Part number | Dimensioni (mm) Dimensions (mm) | |
|-----------------------|------------------------------------|-----|
| | A | B |
| GP 05 | 82 | 50 |
| GP 1 | 90 | 69 |
| GP 05-1M | 90 | 69 |
| GP 2 | 118 | 86 |
| GP ZF | 121 | 91 |
| GP 3 | 170 | 120 |
| GP 35 | 180 | 158 |
| GP 4 | 230 | 175 |

ACCESSORI PER LANTERNA ACCESSORIES FOR BELLHOUSINGS

BARRE AMMORTIZZANTI PER PIEDINI / DAMPING RODS FOR OMT FOOT FLANGES

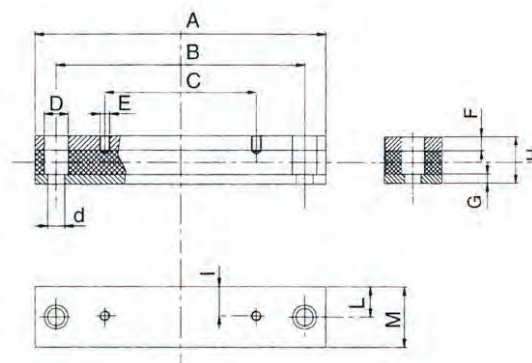
tipo / series **BMA - P****

Costruiti in lega di alluminio e costituiti da 2 barre tra le quali vi si interpone uno strato di gomma vulcanizzata antiolio; tale componente viene applicato tra piedino e coperchio del serbatoio, oppure tra il motore ed il suolo, dove vi sono le maggiori vibrazioni.

I pattini ammortizzanti possono lavorare fino ad una temperatura di +80°C, riducendo la rumorosità 3÷5 decibel.

In alu, they are made of two bars moulded into vulcanized rubber; they are used either between OMT foot flange and oiltank cover or between the motor and the ground where vibrations are higher.

They can work up to +80°C degrees and reduce the noise created by the power transmission by approx. 3÷5 Db.

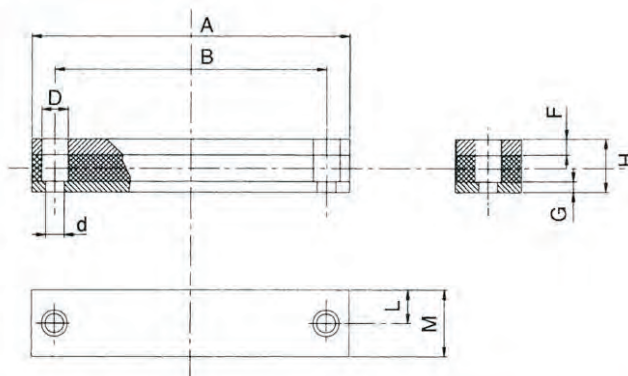


I codici presenti in tabella si riferiscono alla coppia di pattini / Indicated part-numbers refer to 2 pieces of damping rods

| Codice / Part number (1 pair) | Dimensioni (mm) / Dimensions (mm) | | | | | | | | | | | |
|----------------------------------|-----------------------------------|-----|-----|----|----|-----|----|----|----|------|------|----|
| | A | B | C | D | d | E | F | G | H | I | L | M |
| BMA-P160-OMT | 198 | 156 | 80 | 20 | 14 | M8 | 12 | 8 | 40 | 21 | 26,5 | 53 |
| BMA-P200-OMT | 198 | 156 | 103 | 20 | 14 | M8 | 12 | 8 | 40 | 24,5 | 26,5 | 53 |
| BMA-P250-OMT | 244 | 205 | 130 | 20 | 14 | M10 | 12 | 8 | 40 | 24 | 26,5 | 53 |
| BMA-P300-OMT | 288 | 245 | 160 | 20 | 14 | M12 | 12 | 8 | 40 | 20 | 26,5 | 53 |
| BMA-P350-OMT | 419 | 370 | 250 | 26 | 18 | M14 | 15 | 15 | 60 | 28 | 36,5 | 73 |

BARRE AMMORTIZZANTI / DAMPING RODS

tipo / series **BMA**



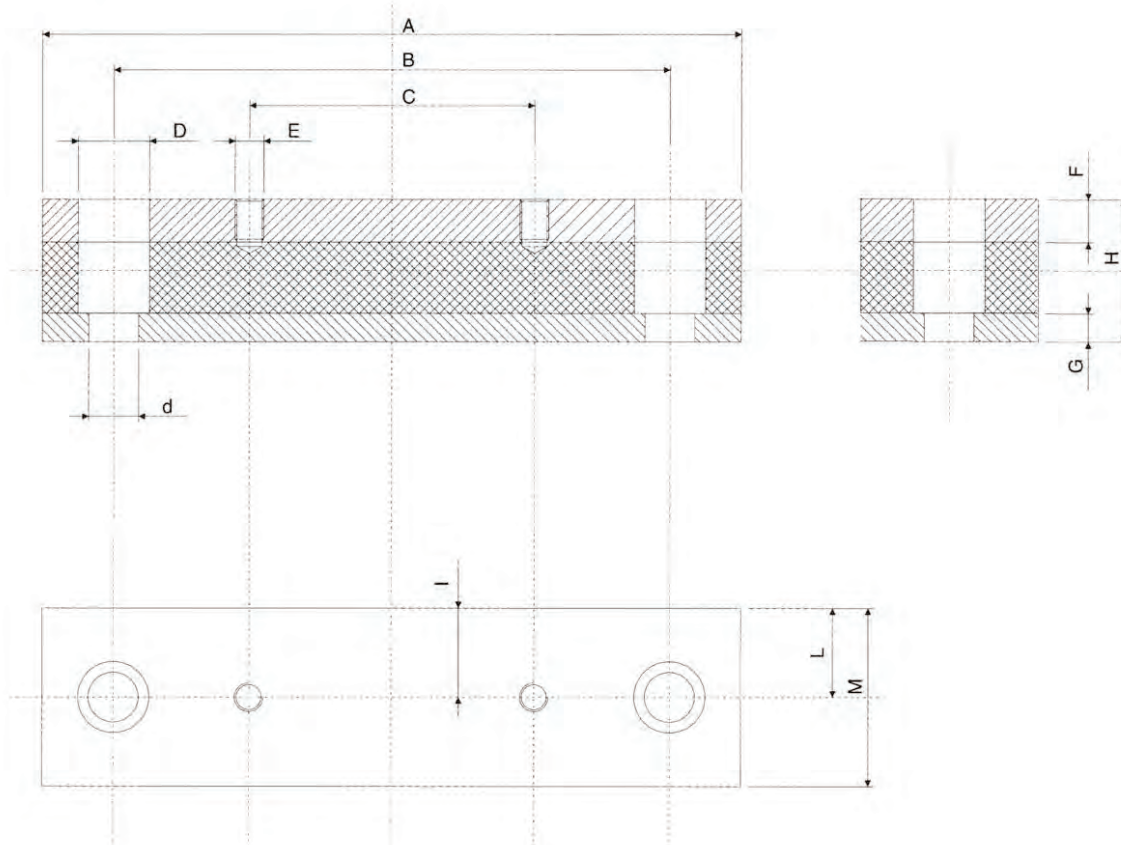
| Codice / Part number (1 pair) | Tabella delle dimensioni (mm) / Dimensions (mm) | | | | | | | | | | Taglie motori Motor size |
|----------------------------------|---|-----|----|----|----|----|----|------|-----|----------------------|-----------------------------|
| | A | B | D | d | F | G | H | L | M | | |
| BMA - 71 | 198 | 156 | 20 | 14 | 12 | 8 | 40 | 26,5 | 53 | 71;80;90 | |
| BMA - 90 | 244 | 205 | 20 | 14 | 12 | 8 | 40 | 26,5 | 53 | 90L;100L;112L | |
| BMA - 132 | 288 | 245 | 20 | 14 | 12 | 8 | 45 | 26,5 | 53 | 132S;132M | |
| BMA - 160 M | 343 | 300 | 26 | 18 | 15 | 15 | 60 | 36,5 | 73 | 160M | |
| BMA - 160 L | 419 | 370 | 26 | 18 | 15 | 15 | 60 | 36,5 | 73 | 160L;180M | |
| BMA - 180 | 446 | 400 | 26 | 22 | 15 | 15 | 60 | 36,5 | 73 | 180 | |
| BMA - 200 | 500 | 430 | 33 | 22 | 15 | 15 | 60 | 36,5 | 73 | 200L;225S | |
| BMA - 225 | 500 | 445 | 33 | 22 | 15 | 15 | 60 | 36,5 | 73 | 225M | |
| BMA - 250 | 500 | 445 | 33 | 22 | 15 | 15 | 60 | 51,5 | 103 | 250M | |
| BMA - 280 | 618 | 570 | 33 | 22 | 15 | 15 | 60 | 51,5 | 103 | 280M;280S | |

ACCESSORI PER LANTERNA ACCESSORIES FOR BELLHOUSINGS

BARRE AMMORTIZZANTI / DAMPING RODS

tipo / series **BMA - F**

con forature motore
with borings for standard motors



| Codice Part number | Per motori taglia For motor size | Dimensioni (mm) / Dimensions (mm) | | | | | | | | | | | |
|-----------------------|-------------------------------------|-----------------------------------|-----|-----|----|----|-----|----|----|----|------|------|-----|
| | | A | B | C | D | d | E | F | G | H | I | L | M |
| BMA - 71 - F | 71 | 198 | 155 | 90 | 20 | 14 | M6 | 12 | 8 | 40 | 21 | 26,5 | 53 |
| BMA - 80 - F | 80 | 198 | 155 | 100 | 20 | 14 | M8 | 12 | 8 | 40 | 22 | 26,5 | 53 |
| BMA - 90S - F | 90S | 198 | 155 | 100 | 20 | 14 | M8 | 12 | 8 | 40 | 24,5 | 26,5 | 53 |
| BMA - 90L - F | 90L | 244 | 205 | 125 | 20 | 14 | M8 | 12 | 8 | 40 | 24 | 26,5 | 53 |
| BMA - 100L - F | 100L | 244 | 205 | 140 | 20 | 14 | M10 | 12 | 8 | 40 | 24 | 26,5 | 53 |
| BMA - 112M - F | 112M | 244 | 205 | 140 | 20 | 14 | M10 | 12 | 8 | 40 | 20 | 26,5 | 53 |
| BMA - 132S - F | 132S | 288 | 245 | 140 | 20 | 14 | M10 | 12 | 8 | 45 | 20 | 26,5 | 53 |
| BMA - 132M - F | 132M | 288 | 245 | 178 | 20 | 14 | M10 | 12 | 8 | 45 | 20 | 26,5 | 53 |
| BMA - 160M - F | 160M | 343 | 300 | 210 | 26 | 18 | M12 | 15 | 15 | 60 | 28 | 36,5 | 73 |
| BMA - 160L - F | 160L | 419 | 370 | 254 | 26 | 18 | M12 | 15 | 15 | 60 | 28 | 36,5 | 73 |
| BMA - 180M - F | 180M | 419 | 370 | 241 | 26 | 18 | M12 | 15 | 15 | 60 | 35 | 36,5 | 73 |
| BMA - 180L - F | 180L | 446 | 400 | 279 | 26 | 22 | M12 | 15 | 15 | 60 | 35 | 36,5 | 73 |
| BMA - 200L - F | 200L | 500 | 430 | 305 | 33 | 22 | M16 | 15 | 15 | 60 | 35 | 36,5 | 73 |
| BMA - 225S - F | 225S | 500 | 430 | 286 | 33 | 22 | M16 | 15 | 15 | 60 | 35 | 36,5 | 73 |
| BMA - 225M - F | 225M | 500 | 445 | 311 | 33 | 22 | M16 | 15 | 15 | 60 | 35 | 36,5 | 73 |
| BMA - 250M - F | 250M | 500 | 445 | 349 | 33 | 22 | M20 | 15 | 15 | 60 | 50 | 51,5 | 103 |
| BMA - 280S - F | 280S | 618 | 570 | 368 | 33 | 22 | M20 | 15 | 15 | 60 | 50 | 51,5 | 103 |
| BMA - 280M - F | 280M | 618 | 570 | 419 | 33 | 22 | M20 | 15 | 15 | 60 | 50 | 51,5 | 103 |