

Part number:

HYDROMA

HYDRAULICKÉ SYSTÉMY

**HIDROMA
SYSTEMS**

UKŁADY HYDRAULICZNE

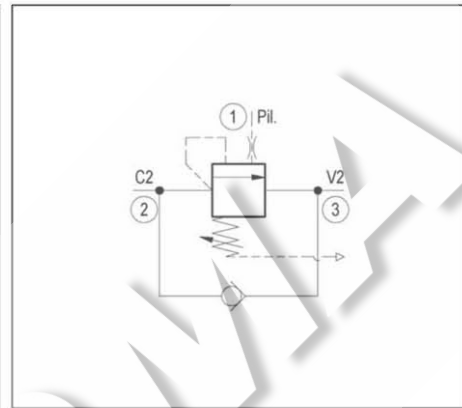
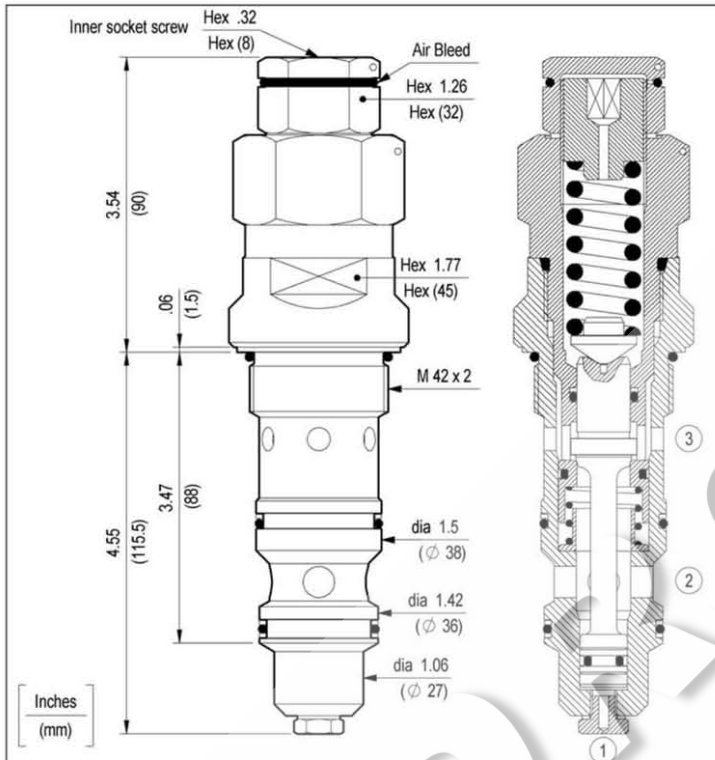
HYDROMA

ГИДРАВЛИЧЕСКИЕ СИСТЕМЫ

**COUNTERBALANCE, VENTED GUIDED POPPET TYPE
SPECIAL CAVITY**

VBSO-SEC-CCAP-42

04.59.04 - X - 99 - Z



TECHNICAL DATA

Max. pressure: 5000 psi (350 bar)

Max. flow: 79 gpm (300 l/min)

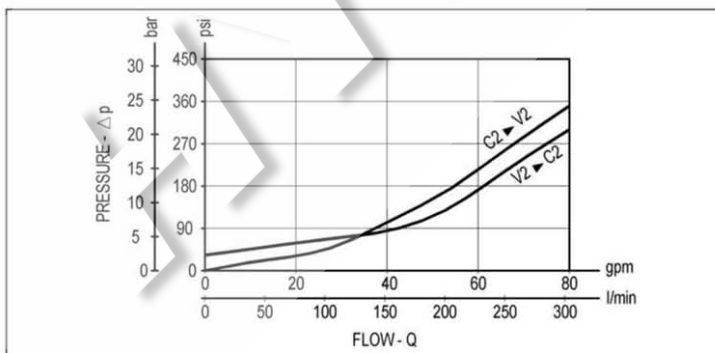
Special cavity : CD073A-01 (see page CT.S.005.U)

Installation torque : 182-202 ft-lb (246-272 Nm)

Weight: 3.087 lbs (1.400 Kg)

Pressure setting: at least 1.3 times the load induced pressure

When pressure at 3 rises above the spring bias pressure, the check seat is pushed away from the piston and flow is allowed from 3 to 2. When load pressure at 2 rises above the pressure setting, the direct-acting, relief function is activated and flow is relieved from 2 to 3. With pilot pressure at 1, the pressure setting is reduced in proportion to the stated ratio of the valve, until fully open with free-flow from 2 to 3. The spring chamber is vented to atmosphere allowing operation of all functions independent of back-pressure at 3.



X

PILOT RATIO

03

4 : 1

Z	SPRINGS		
	Adj. press. range psi (bar)	Press. increase psi / turn (bar/turn)	Standard setting psi (bar) (Q=5 l/min)
35	1450-5000 (100-350)	1059 (73)	5000 (350)