

Part number:

006-10090

HYDROMA

HYDRAULICKÉ SYSTÉMY

**HIDROMA
SYSTEMS**

UKŁADY HYDRAULICZNE

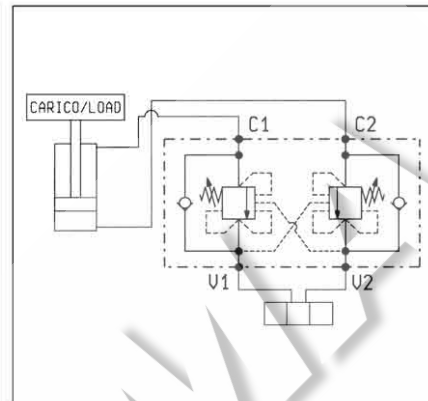
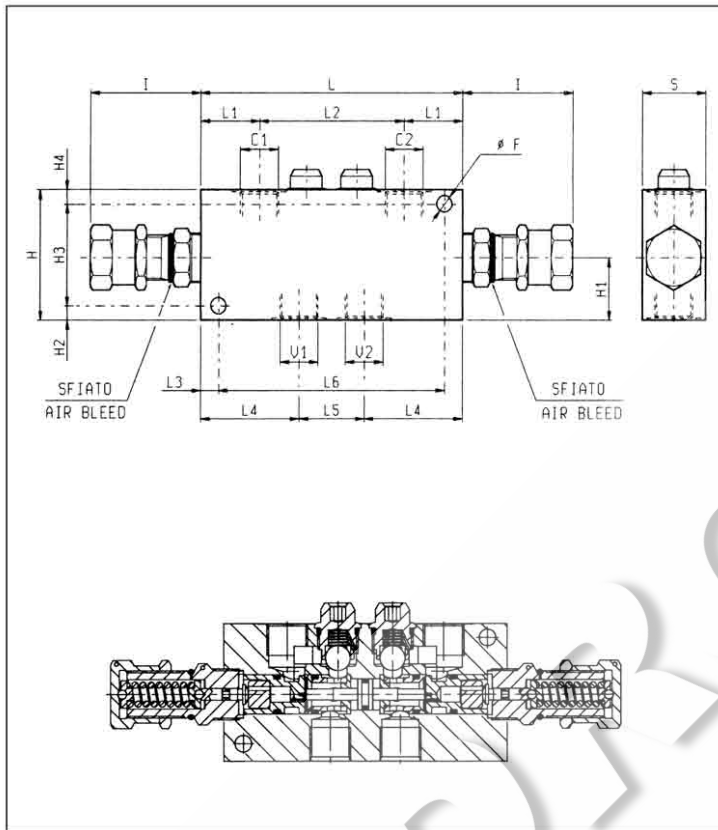
HYDROMA

ГИДРАВЛИЧЕСКИЕ СИСТЕМЫ

**BILANCIAMENTO, DOPPIO EFFETTO, VERSIONE "CC"
DUAL PILOT ASSISTED, "CC" TYPE OVERCENTRE**

VBSO-DE-CC

05.42.05- X - Y - Z



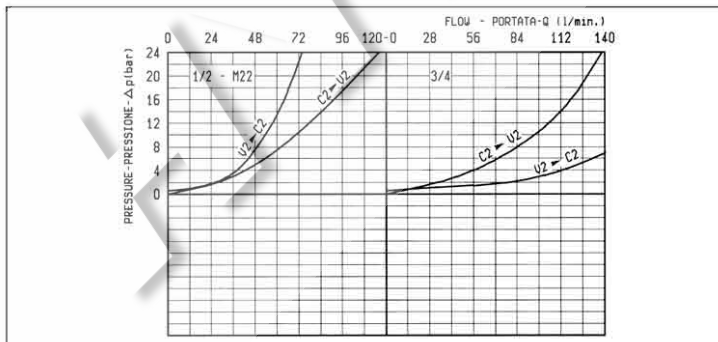
DATI TECNICI / TECHNICAL DATA

Pressione max. 350 bar
Max. pressure

Portata max. vedi diagramma
Flow see performance graph

Taratura della valvola: almeno 1.3 volte superiore alla pressione indotta dal carico
Pressure setting: at least 1.3 times the load induced pressure

| | | | | | | | | | | | | | | | | |
|----------|-----------|-----------|-----------|-----------|-----------|-----------|----------|----------|-----------|-----------|-----------|-----------|----------|----------|----------|----------------------|
| 40 | 155 | 50 | 62.5 | 10 | 107 | 34 | 175 | 65 | 10 | 70 | 10 | 38 | 90 | 10.5 | 3/4 | 2.15 |
| 35 | 125 | 36 | 54.5 | 10 | 86 | 29.5 | 145 | 65 | 8 | 54 | 8 | 33 | 70 | 8.5 | M22 | 1.45 |
| 35 | 125 | 36 | 54.5 | 10 | 80 | 32.5 | 145 | 65 | 8 | 54 | 8 | 33 | 70 | 8.5 | 1/2 | 1.45 |
| S | L6 | L5 | L4 | L3 | L2 | L1 | L | I | H4 | H3 | H2 | H1 | H | F | Y | Peso kg Weight kg |



| X | RAPPORTO DI PILOTAGGIO PILOT RATIO |
|-----------|---|
| 02 | 8.2 : 1 |
| 10 | 3.2 : 1 |

| Z | MOLLE / SPRINGS | | | | |
|-----------|---|---|---|-----------------------------------|------------------|
| | Campo taratura min - max bar Adj. press. range bar | Incremento press. bar / giro vite Press. increase bar / turn | Taratura standard bar (Q = 5 l/min) Std. setting bar (made at = 5 l/min) | Cod. ordinazione Ordering code | Colore Colour |
| 20 | 60-210 | 54 | 200 | 03.51.01.075 | verde green |
| 35 | 100-350 | 95 | 350 | 03.51.01.059 | giallo yellow |

| Y | ATTACCHI / PORT SIZE | |
|-----------|-----------------------------|--|
| | V1-V2-C1-C2 | |
| 03 | G 1/2 | |
| 04 | G 3/4 | |
| 89 | M22x1.5 | |

Marzo 99