

Part number:

**HYDROMA**

HYDRAULICKÉ SYSTÉMY

**HIDROMA
SYSTEMS**

UKŁADY HYDRAULICZNE

HYDROMA

ГИДРАВЛИЧЕСКИЕ СИСТЕМЫ

Solenoid operated valves pilot operated poppet type
2-way normally open
Special cavity, 019-E

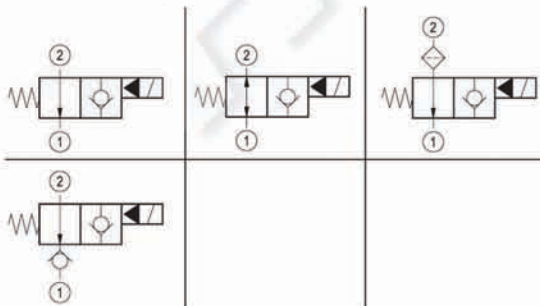
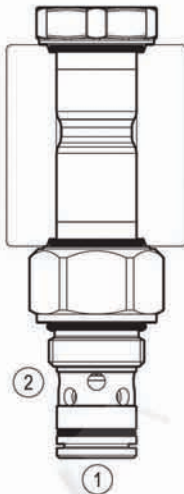
VEI-16-08S-NA

OD.15 - X - 19 - Y - Z - 00

RE 18323-28

Edition: 03.2017

Replaces: 07.2016

**PATENT PENDING****Technical data**

New VEI-16 family incorporates a new solenoid concept providing excellent performance and enables cartridges to work in severe environment. Cartridges also incorporates advanced design of hydraulic parts providing excellent hydraulic performance.

Technical data

General	
Weight	0.15 kg (0.33 lbs)
Installation orientation	Unrestricted
Ambient temperature range	-30 to 90 °C (-22 to 194 °F)
Hydraulic	
Max. operating pressure	350 bar (5000 psi)
Flow range	0.5 - 40 l/min (0.1 - 11 gpm)
Fatigue cycle life	2 million cycles at 350 bar 150000 cycles at 420 bar
Max. internal leakage	5 drops/min.
Switching time	Closing ≤ 100 ms Opening ≤ 30 ms
Fluid temperature range	-20 to 80 °C (-4 to 176 °F)
Fluids: Mineral-based or synthetics with lubricating properties at viscosities of 20 to 380 mm ² /s (cSt)	
Installation torque	39 - 51 Nm (29 - 38 ft-lbs)
Recommended degree of fluid contamination	Nominal value max. 10 µm (NAS 8) ISO 4406 19/17/14
MTTFd	150 years see RE 18350-51
Special cavity	019-E see 18325-75
Seal kit for X=02,06,08	code RG19E201052010 material no. R934003560
Seal kit for X=12	code RG19E201053010 material no. R934003561
Seal kit coil	code RG01Z0010000100 material no. R930058940
Other technical data	See data sheet 18350-50
Electrical	
Type of voltage	DC voltage
Coil type	D36
Supply voltage	See data sheet 18325-90
Voltage tolerance against ambient temperature	See characteristic curve
Power consumption	20 W
Type of protection	See data sheet 18325-90
Note: Coils must be ordered separately	

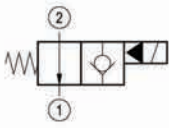
Ordering code

	OD.15	X	19	Y	Z	0000	*
--	--------------	----------	-----------	----------	----------	-------------	----------

Solenoid operated valves
pilot operated poppet type
2-way normally open

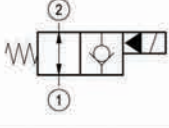
Series O/A to L
unchanged performances and dimensions

monodirectional type



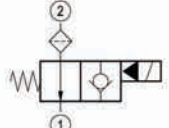
02

bidirectional type



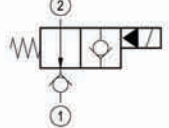
06

monodirectional type with filter



08

monodirectional type with check



12

0 = With buna seal
V = With Viton seal
P = With buna seal and protective cap for override version **B** and **C**
T = With Viton seal and protective cap for override version **B** and **C**

A = Standard
B = Push style manual override
C = Push and twist style manual override

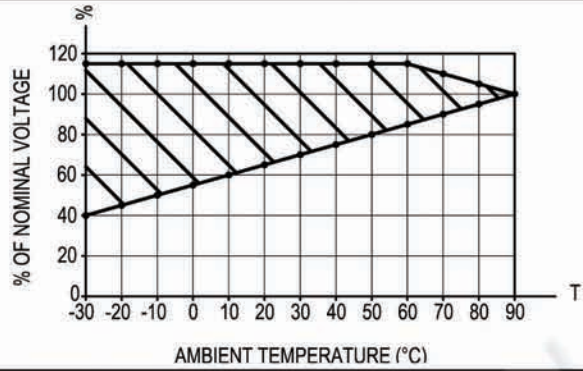
Special cavity: 019-E

Type	Material number
OD150619A000000	R930058434
OD150619B000000	R930058437
OD150819A000000	R930058426
OD150819B000000	R930060936
OD150219A000000	R930060915

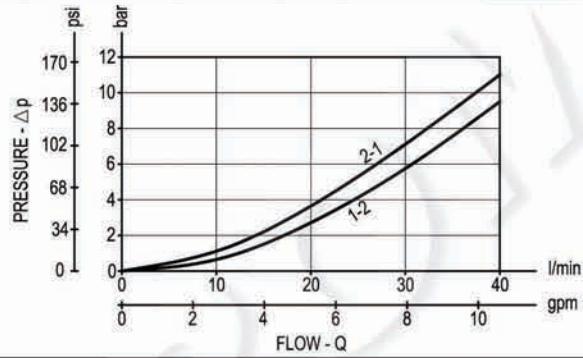
Type	Material number
OD150219B000000	R930060917
OD151219A000000	R930060944
OD151219B000000	R930060946

Characteristic curves

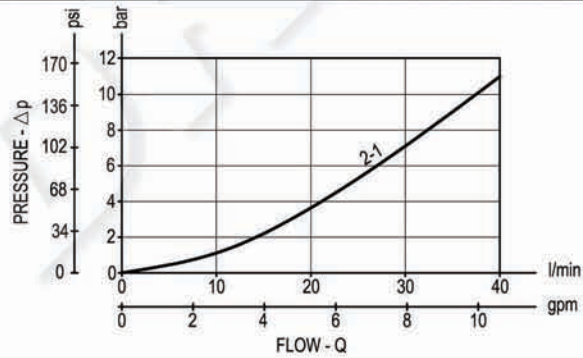
All Versions - Admissible supply voltage Vs. Ambient temperature at 100% duty cycle



Version 02-06-08



Version 12



Dimensions

Solenoid operated valves, poppet 2-way normally open

