

Part number:

**HYDROMA**

HYDRAULICKÉ SYSTÉMY

**HIDROMA  
SYSTEMS**

UKŁADY HYDRAULICZNE

**HYDROMA**

ГИДРАВЛИЧЕСКИЕ СИСТЕМЫ

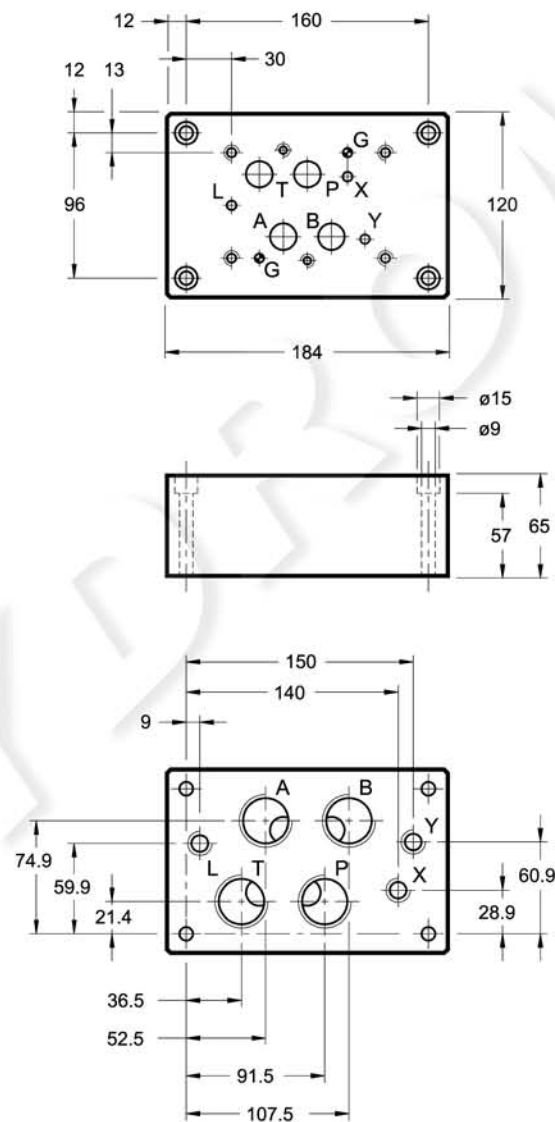
# PME07

## SUBPLATES FOR ISO 4401-07 (CETOP 07) VALVES

### 19 - OVERALL AND MOUNTING DIMENSIONS PME07-AI6G/10 (cod. 1961071)

dimensions in mm

ISO 4401-07-07-0-05  
(CETOP 4.2-4-07-350)



Ports on rear.  
Threading of ports:  
P-T-A-B 1" BSP  
X-Y-L 1/4" BSP

p max 350 bar

Mass: kg 9

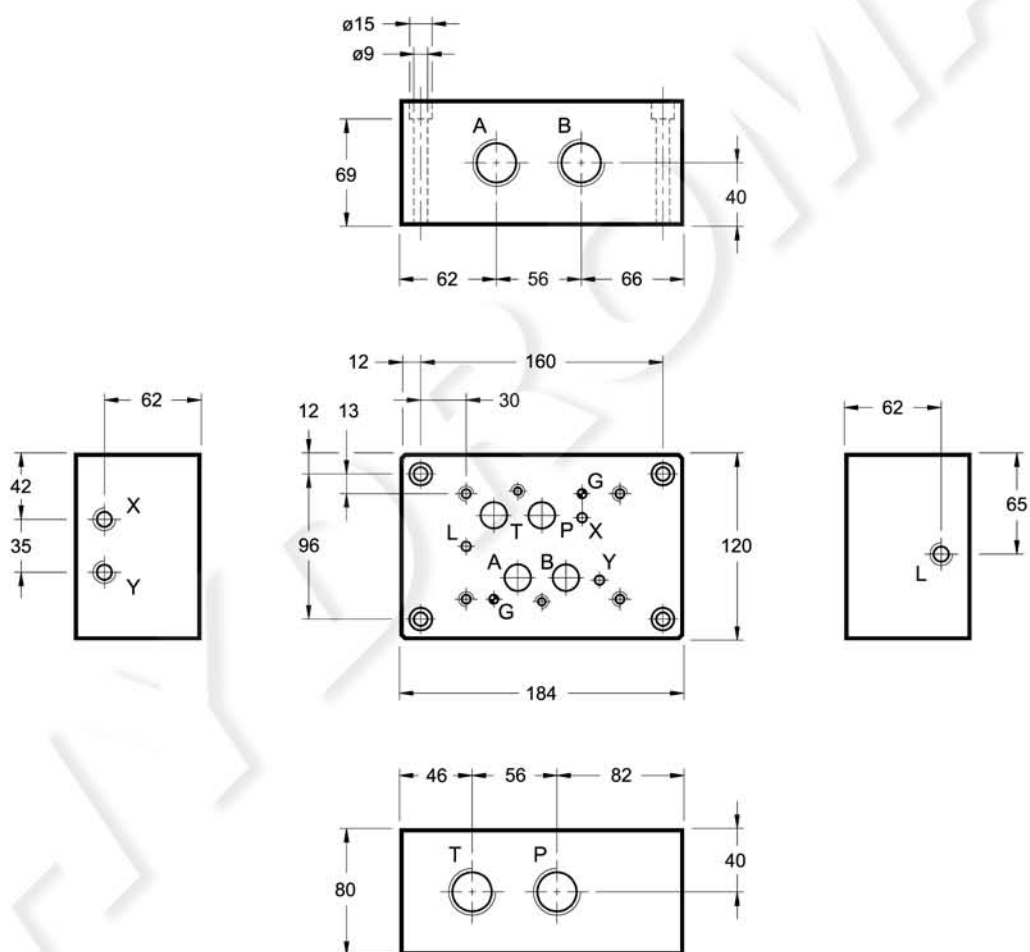
# PME07

## SUBPLATES FOR ISO 4401-07 (CETOP 07) VALVES

### 20 - OVERALL AND MOUNTING DIMENSIONS PME07-AL6G/10 (cod. 1961111)

dimensions in mm

ISO 4401-07-07-0-05  
(CETOP 4.2-4-07-350)



Side ports.  
Threading of ports:  
P-T-A-B 1" BSP  
X-Y-L 1/4" BSP

p max 350 bar

Mass: kg 11,5